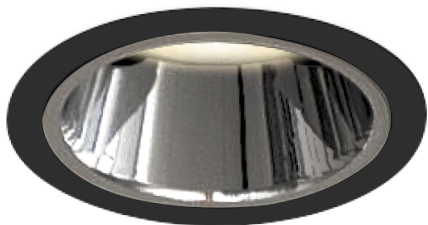


Item no. DD052-1340MB9035

Series Name:  $\Phi$ 80 Series Reflector Type, Fixed



|                  |  |
|------------------|--|
| Installation     | Recessed mount                         |
| Type             | $\Phi$ 80 Series Reflector Type, Fixed |
| Fixture wattage  | 14.7W                                  |
| Beam angle       | 45 deg                                 |
| Color Temp.      | 3500K                                  |
| CRI              | Ra>90                                  |
| Luminous         | 728 lm                                 |
| Body             | Die-cast aluminum alloy                |
| Body finish      | N/A                                    |
| Trim finish      | Black                                  |
| Reflector finish | Mirror                                 |
| IP Rate          | IP20                                   |
| Light source     | COB module                             |
| Input Voltage    | AC220~240V                             |
| Dimming Type     | Non-Dimmable                           |
| Certificate      | CE, CCC                                |
| Cut Hole         | 80mm                                   |

