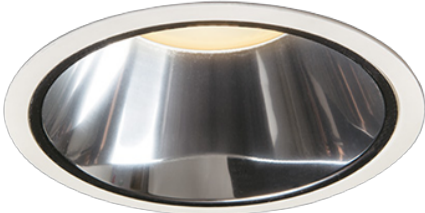
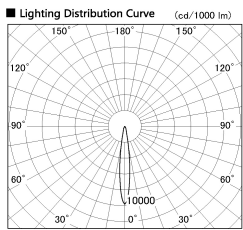


Item no. DD099-2115DW9030D

Series Name: Φ 125 Spark (Deep Cone)



With Dark Mirror Reflector



■ Direct Horizontal Illuminance DD099-2115DW9030D

| Illuminance Angle | Beam Angle | Vertical Illuminance (lx) |
|-------------------|------------|---------------------------|
| 13° | 14° | 61050 |
| | | 15260 |
| | | 6780 |
| | | 3820 |
| | | 2440 |
| 14° | 14° | 1700 |
| | | 1250 |
| | | 950 |

| | |
|------------------|-------------------------|
| Installation | Recessed mount |
| Type | |
| Fixture wattage | 19.9W |
| Beam angle | 14 deg |
| Color Temp. | 3000K |
| CRI | Ra>90 |
| Luminous | 1548 lm |
| Body | Die-cast aluminum alloy |
| Body finish | N/A |
| Trim finish | White |
| Reflector finish | Dark Mirror |
| IP Rate | IP20 |
| Light source | COB module |
| Input Voltage | AC220~240V |
| Dimming Type | Non-Dimmable |
| Certificate | CE, CCC |
| Cut Hole | 125mm |

