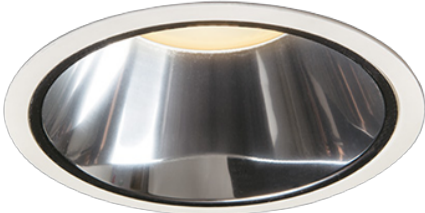
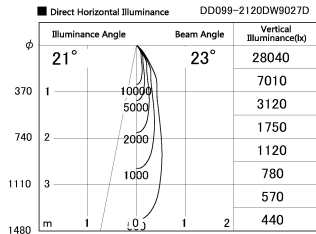
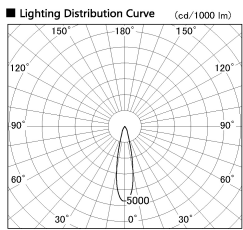


Item no. DD099-2120DW9027D

Series Name: Φ 125 Spark (Deep Cone)



With Dark Mirror Reflector



Installation	Recessed mount
Type	
Fixture wattage	19.9W
Beam angle	24 deg
Color Temp.	2700K
CRI	Ra>90
Luminous	1484 lm
Body	Die-cast aluminum alloy
Body finish	N/A
Trim finish	White
Reflector finish	Dark Mirror
IP Rate	IP20
Light source	COB module
Input Voltage	AC220~240V
Dimming Type	Non-Dimmable
Certificate	CE, CCC
Cut Hole	125mm

