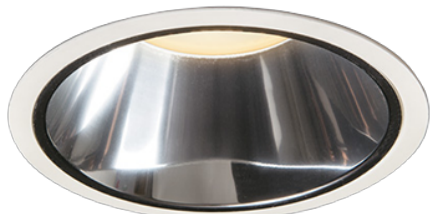


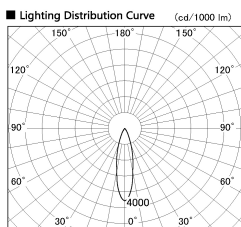
Item no. DD099-2130DW8527D

Series Name: Φ 125 Spark (Deep Cone)



With Dark Mirror Reflector

Installation	Recessed mount
Type	Φ 125 Spark (Deep Cone)
Fixture wattage	19.9W
Beam angle	25 deg
Color Temp.	2700K
CRI	Ra>85
Luminous	1610 lm
Body	Die-cast aluminum alloy
Body finish	N/A
Trim finish	White
Reflector finish	Dark Mirror
IP Rate	IP20
Light source	COB module
Input Voltage	AC220~240V
Dimming Type	Non-Dimmable
Certificate	CE, CCC
Cut Hole	125mm



Direct Horizontal Illuminance DD099-2130DW8527D

Illuminance Angle	Beam Angle	Vertical Illuminance (lx)	
23°	25°	23670	
1	10000	5920	
1	5000	2630	
810	2	1480	
2	2000	950	
1220	3	660	
1	1000	480	
1620	m	1	370
		0	

