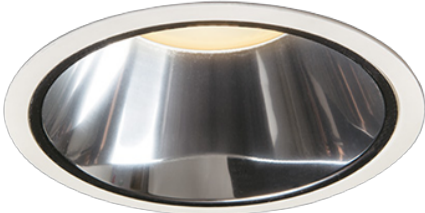
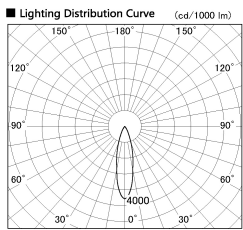


Item no. DD099-2130DW9027D

Series Name:  $\Phi$ 125 Spark (Deep Cone)



With Dark Mirror Reflector



Direct Horizontal Illuminance DD099-2130DW9027D

Illuminance Angle	Beam Angle	Vertical Illuminance (lx)	
23°	25°	21520	
1	1000	5380	
400	5000	2390	
1	2000	1350	
810	1000	860	
2	500	600	
1220	0	440	
3	0	340	
1620	1	2	340

Installation	Recessed mount
Type	
Fixture wattage	19.9W
Beam angle	25 deg
Color Temp.	2700K
CRI	Ra>90
Luminous	1464 lm
Body	Die-cast aluminum alloy
Body finish	N/A
Trim finish	White
Reflector finish	Dark Mirror
IP Rate	IP20
Light source	COB module
Input Voltage	AC220~240V
Dimming Type	Non-Dimmable
Certificate	CE, CCC
Cut Hole	125mm

