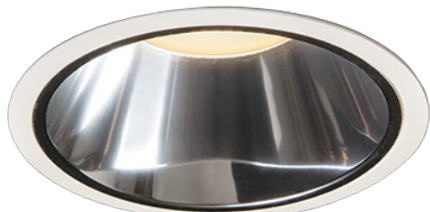


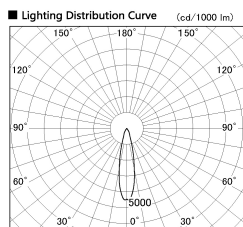
Item no. DD099-2520DW8527D

Series Name:  $\Phi$ 125 Spark (Deep Cone)



With Dark Mirror Reflector

Installation	Recessed mount
Type	$\Phi$ 125 Spark (Deep Cone)
Fixture wattage	23W
Beam angle	23 deg
Color Temp.	2700K
CRI	Ra>85
Luminous	2006 lm
Body	Die-cast aluminum alloy
Body finish	N/A
Trim finish	White
Reflector finish	Dark Mirror
IP Rate	IP20
Light source	COB module
Input Voltage	AC220~240V
Dimming Type	Non-Dimmable
Certificate	CE, CCC
Cut Hole	125mm



Direct Horizontal Illuminance DD099-2520DW8527D

Illuminance Angle	Beam Angle	Vertical Illuminance (lx)
21°	23°	35860
370	1	8970
740	2	3980
1110	3	2240
1480	m	1430
	1	1000
	0	730
	1	560
	2	

