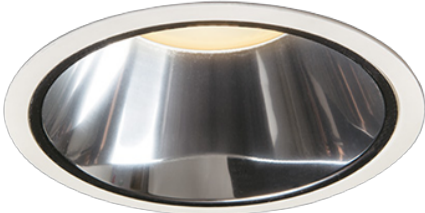
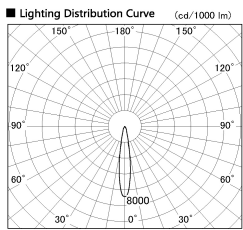


Item no. DD099-3015DW8535D

Series Name:  $\Phi$ 125 Spark (Deep Cone)



With Dark Mirror Reflector



■ Direct Horizontal Illuminance DD099-3015DW8535D

Beam Angle	Vertical Illuminance (lx)
16°	79810
17°	19950
18°	8870
19°	4990
20°	3190
22°	2220
24°	1630
26°	1250

Installation	Recessed mount
Type	
Fixture wattage	30.3W
Beam angle	17 deg
Color Temp.	3500K
CRI	Ra>85
Luminous	2795 lm
Body	Die-cast aluminum alloy
Body finish	N/A
Trim finish	White
Reflector finish	Dark Mirror
IP Rate	IP20
Light source	COB module
Input Voltage	AC220~240V
Dimming Type	Non-Dimmable
Certificate	CE, CCC
Cut Hole	125mm

