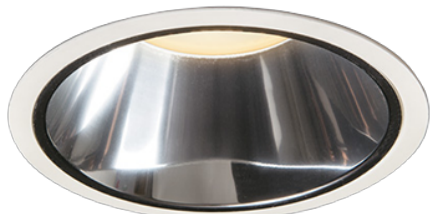


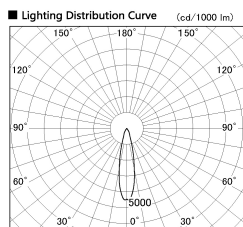
Item no. DD099-3020DW9027D

Series Name:  $\Phi$ 125 Spark (Deep Cone)



With Dark Mirror Reflector

Installation	Recessed mount
Type	$\Phi$ 125 Spark (Deep Cone)
Fixture wattage	30.3W
Beam angle	23 deg
Color Temp.	2700K
CRI	Ra>90
Luminous	2388 lm
Body	Die-cast aluminum alloy
Body finish	N/A
Trim finish	White
Reflector finish	Dark Mirror
IP Rate	IP20
Light source	COB module
Input Voltage	AC220~240V
Dimming Type	Non-Dimmable
Certificate	CE, CCC
Cut Hole	125mm



Direct Horizontal Illuminance DD099-3020DW9027D

Beam Angle	Vertical Illuminance (lx)
21°	42690
23°	10670
25°	4740
27°	2670
29°	1710
31°	1190
33°	870
35°	670

