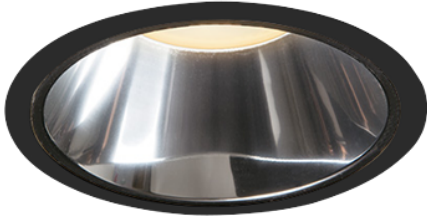
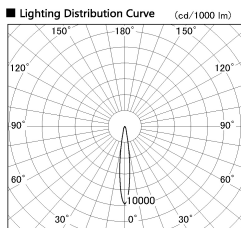


Item no. DD099-2115DB9035D

Series Name: Φ 125 Spark (Deep Cone)



With Dark Mirror Reflector



■ Direct Horizontal Illuminance DD099-2115DB9035D

| Illuminance Angle | Beam Angle | Vertical Illuminance (lx) |
|-------------------|------------|---------------------------|
| 13° | 1 | 62280 |
| | 2 | 15570 |
| 14° | 1 | 6920 |
| | 2 | 3890 |
| 15° | 1 | 5000 |
| | 2 | 2490 |
| 16° | 1 | 2000 |
| | 2 | 1730 |
| 18° | 1 | 1270 |
| | 2 | 970 |

| | |
|------------------|-------------------------|
| Installation | Recessed mount |
| Type | |
| Fixture wattage | 19.9W |
| Beam angle | 14 deg |
| Color Temp. | 3500K |
| CRI | Ra>90 |
| Luminous | 1579 lm |
| Body | Die-cast aluminum alloy |
| Body finish | N/A |
| Trim finish | Black |
| Reflector finish | Dark Mirror |
| IP Rate | IP20 |
| Light source | COB module |
| Input Voltage | AC220~240V |
| Dimming Type | Non-Dimmable |
| Certificate | CE, CCC |
| Cut Hole | 125mm |

