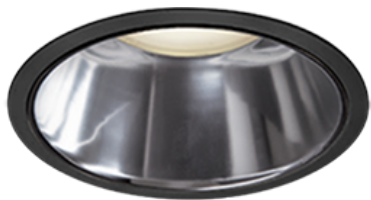


Item no. DD099-2120WB8540D

Series Name: Φ 125 Spark (Deep Cone)



White Reflector

Installation	Recessed mount
Type	Φ 125 Spark (Deep Cone)
Fixture wattage	19.9W
Beam angle	26 deg
Color Temp.	4000K
CRI	Ra>85
Luminous	1693 lm
Body	Die-cast aluminum alloy
Body finish	N/A
Trim finish	Black
Reflector finish	White
IP Rate	IP20
Light source	COB module
Input Voltage	AC220~240V
Dimming Type	Non-Dimmable
Certificate	CE, CCC
Cut Hole	125mm

