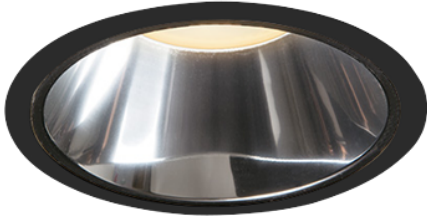
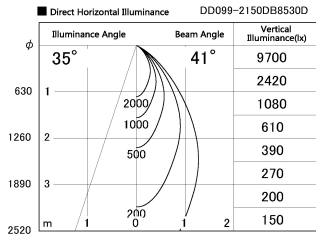
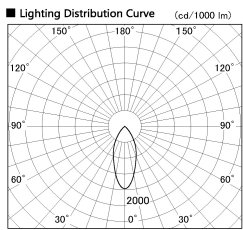


Item no. DD099-2150DB8530D

Series Name:  $\Phi$ 125 Spark (Deep Cone)



With Dark Mirror Reflector



Installation	Recessed mount
Type	$\Phi$ 125 Spark (Deep Cone)
Fixture wattage	19.9W
Beam angle	41 deg
Color Temp.	3000K
CRI	Ra>85
Luminous	1538 lm
Body	Die-cast aluminum alloy
Body finish	N/A
Trim finish	Black
Reflector finish	Dark Mirror
IP Rate	IP20
Light source	COB module
Input Voltage	AC220~240V
Dimming Type	Non-Dimmable
Certificate	CE, CCC
Cut Hole	125mm

