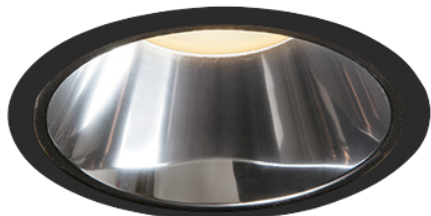


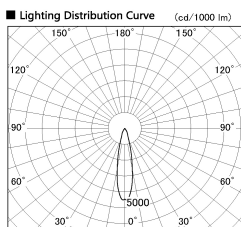
Item no. DD099-2520DB8540D

Series Name: Φ 125 Spark (Deep Cone)



With Dark Mirror Reflector

Installation	Recessed mount
Type	
Fixture wattage	23W
Beam angle	23 deg
Color Temp.	4000K
CRI	Ra>85
Luminous	2153 lm
Body	Die-cast aluminum alloy
Body finish	N/A
Trim finish	Black
Reflector finish	Dark Mirror
IP Rate	IP20
Light source	COB module
Input Voltage	AC220~240V
Dimming Type	Non-Dimmable
Certificate	CE, CCC
Cut Hole	125mm



Direct Horizontal Illuminance DD099-2520DB8540D

Illuminance Angle	Beam Angle	Vertical Illuminance (lx)
21°	23°	38490
370	1	9620
740	2	4280
1110	3	2410
1480	m	1540
	1	1070
	0	790
	1	600
	2	600

