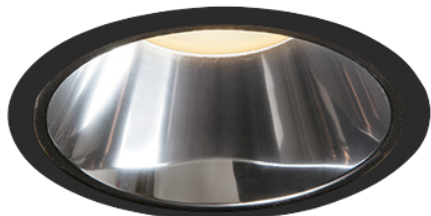


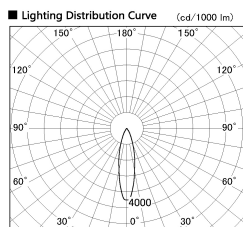
Item no. DD099-3030DB8527D

Series Name: Φ 125 Spark (Deep Cone)



With Dark Mirror Reflector

Installation	Recessed mount
Type	
Fixture wattage	30.3W
Beam angle	24 deg
Color Temp.	2700K
CRI	Ra>85
Luminous	2592 lm
Body	Die-cast aluminum alloy
Body finish	N/A
Trim finish	Black
Reflector finish	Dark Mirror
IP Rate	IP20
Light source	COB module
Input Voltage	AC220~240V
Dimming Type	Non-Dimmable
Certificate	CE, CCC
Cut Hole	125mm



Direct Horizontal Illuminance DD099-3030DB8527D

φ	Illuminance Angle	Beam Angle	Vertical Illuminance (lx)
400	23°	24°	37650
810			9410
1220			4180
1620			2350
			1510
			1050
			770
			590

