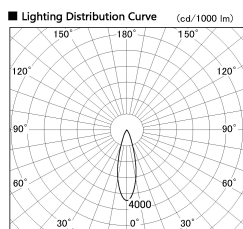
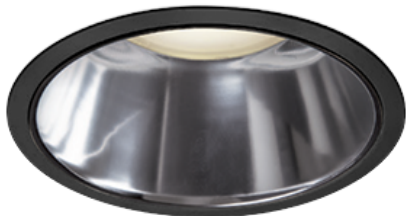


Item no. DD138-2830MB9027D

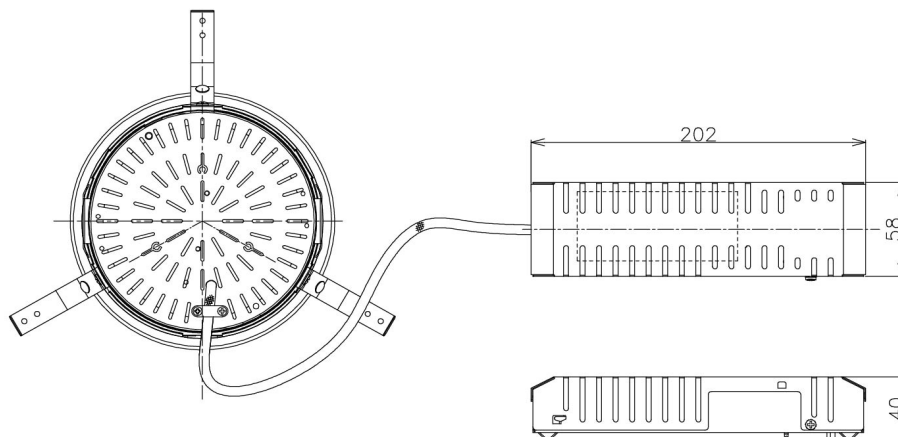
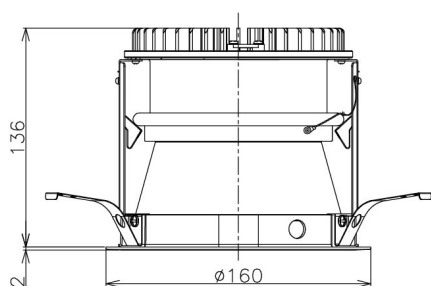
Series Name:  $\Phi$ 150 Spark (Deep Cone)  
(DD138D)



■ Direct Horizontal Illuminance DD138-2830MB9027D

φ	Illuminance Angle		Beam Angle	Vertical Illuminance (lx)
	26°	28°		
460	20000	10000	28°	44600
920	5000	2500		11150
1380	2000	1000		4960
1840	1000	500		2790
				1780
				1240
				910
				700

Installation	Recessed Mount
Type	$\Phi$ 150 Spark (Deep Cone) (DD138D)
Fixture wattage	28W
Beam angle	28 deg
Color Temp.	2700K
CRI	Ra>90
Luminous	3125 lm
Body	Die-cast aluminum alloy
Body finish	Black
Trim finish	Black
Reflector finish	Mirror
IP Rate	IP20
Light source	COB module
Input Voltage	AC220~240V
Dimming Type	Non-Dimmable
Certificate	CE,CCC
Cut Hole	150



Height (Weight)	Spot / Medium / Medium flood	Wide flood
46.5W	175 (1.4kg)	
41.0W	155 (1.1kg)	
28.0W	166 (1.1kg)	155 (1.1kg)
23.0W	136 (0.9kg)	125 (0.9kg)
20.0W	136 (0.9kg)	125 (0.9kg)