

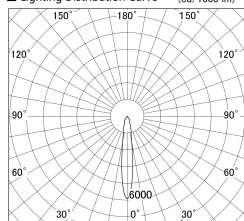
Item no. DD139-2515DB9027

Series Name: cledy spark (Normal Cone)
Fixed downlight Φ 125 (DD139)

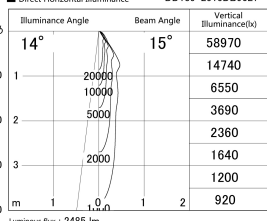


With Dark Mirror Reflector

■ Lighting Distribution Curve (cd/1000 lm)



■ Direct Horizontal Illuminance DD139-2515DB9027



Installation	Recessed mount
Type	cledy spark (Normal Cone) Fixed downlight Φ 125 (DD139)
Fixture wattage	24W
Beam angle	15
Color Temp.	2700K
CRI	Ra>90
Luminous	2485 lm
Body	Die-cast aluminum alloy
Body finish	N/A
Trim finish	Black
Reflector finish	Dark Mirror
IP Rate	IP20
Light source	COB module
Input Voltage	AC220~240V
Dimming Type	Non-Dimmable
Certificate	CE,CCC
Cut Hole	125mm

