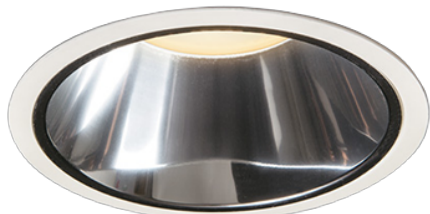


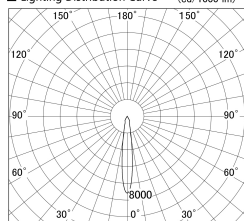
Item no. DD139-2515DW9027D

Series Name: cledy spark (Normal Cone)
Fixed downlight $\Phi 125$ (DD139_D)

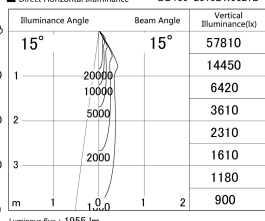


With Dark Mirror Reflector

■ Lighting Distribution Curve (cd/1000 lm)



■ Direct Horizontal Illuminance DD139-2515DW9027D



| | |
|------------------|--|
| Installation | Recessed mount |
| Type | cledy spark (Normal Cone) Fixed downlight $\Phi 125$ (DD139_D) |
| Fixture wattage | 24W |
| Beam angle | 15 |
| Color Temp. | 2700K |
| CRI | Ra>90 |
| Luminous | 1957 lm |
| Body | Die-cast aluminum alloy |
| Body finish | N/A |
| Trim finish | White |
| Reflector finish | Dark Mirror |
| IP Rate | IP20 |
| Light source | COB module |
| Input Voltage | AC220~240V |
| Dimming Type | Non-Dimmable |
| Certificate | CE,CCC |
| Cut Hole | 125mm |

