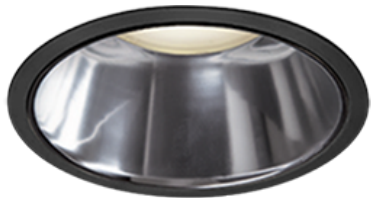


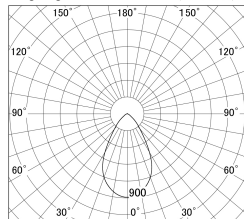
Item no. DD139-3050WB9030D

Series Name: cledy spark (Normal Cone)  
Fixed downlight  $\Phi$ 125 (DD139\_D)

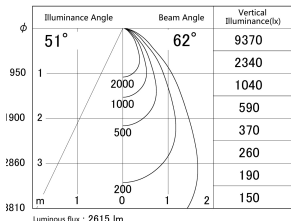


White Reflector

■ Lighting Distribution Curve (cd/1000 lm)



■ Direct Horizontal Illuminance DD139-3050WB9030D



|                  |  |
|------------------|--|
| Installation     | Recessed mount   |
| Type             | cledy spark (Normal Cone)<br>Fixed downlight $\Phi$ 125<br>(DD139_D) |
| Fixture wattage  | 28W  |
| Beam angle       | 62   |
| Color Temp.      | 3000K  |
| CRI              | Ra>90  |
| Luminous         | 2613 lm  |
| Body             | Die-cast aluminum alloy  |
| Body finish      | N/A  |
| Trim finish      | Black  |
| Reflector finish | White  |
| IP Rate          | IP20   |
| Light source     | COB module   |
| Input Voltage    | AC220~240V   |
| Dimming Type     | Non-Dimmable   |
| Certificate      | CE,CCC   |
| Cut Hole         | 125mm  |

