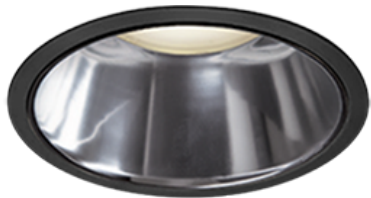


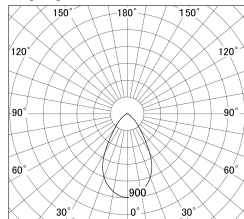
Item no. DD139-1550WB9040D

Series Name: cledy spark (Normal Cone)
Fixed downlight Φ 125 (DD139_D)

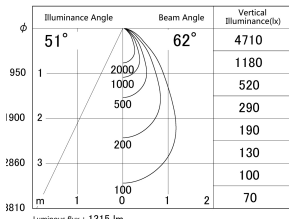


White Reflector

■ Lighting Distribution Curve (cd/1000 lm)



■ Direct Horizontal Illuminance DD139-1550WB9040D



| | |
|------------------|--|
| Installation | Recessed mount |
| Type | cledy spark (Normal Cone) Fixed downlight Φ 125 (DD139_D) |
| Fixture wattage | 14W |
| Beam angle | 62 |
| Color Temp. | 4000K |
| CRI | Ra>90 |
| Luminous | 1315 lm |
| Body | Die-cast aluminum alloy |
| Body finish | N/A |
| Trim finish | Black |
| Reflector finish | White |
| IP Rate | IP20 |
| Light source | COB module |
| Input Voltage | AC220~240V |
| Dimming Type | Non-Dimmable |
| Certificate | CE,CCC |
| Cut Hole | 125mm |

