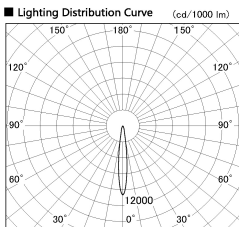
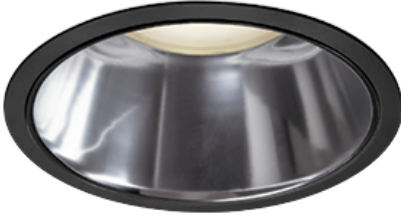


Item no. DD138-2015MB9030D

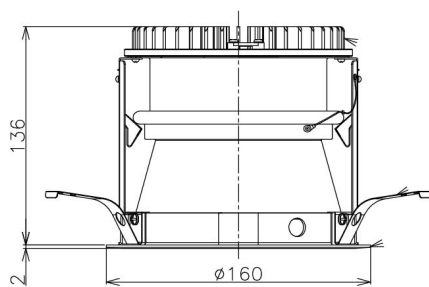
Series Name: Cledy spark (Deep cone)
(DD138D)



■ Direct Horizontal Illuminance DD138-2015MB9030D

φ	Illuminance Angle	Beam Angle	Vertical Illuminance (lx)
1	12°	13°	87310
210			21830
1			9700
2			5460
420			3490
2			2430
630			1780
3			1360
840			

Installation	Recessed Mount	
Type	High-efficiency downlight Φ150	Fixed
Fixture wattage	20W	
Beam angle	13 deg	
Color Temp.	3000K	
CRI	Ra>90	
Luminous	2088 lm	
Body	Die-cast aluminum alloy	
Body finish	Black	
Trim finish	Black	
Reflector finish	Mirror	
IP Rate	IP20	
Light source	COB module	
Input Voltage	AC220~240V	
Dimming Type	Non-Dimmable	
Certificate	CE,CCC	
Cut Hole	150	



Height (Weight)	Spot / Medium / Medium flood	Wide flood
48.5W	175 (1.4kg)	
41.0W	155 (1.1kg)	
28.0W	166 (1.1kg)	155 (1.1kg)
23.0W	136 (0.9kg)	125 (0.9kg)
20.0W	136 (0.9kg)	125 (0.9kg)

