

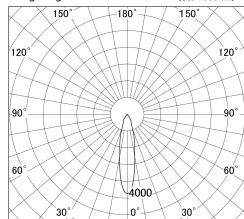
Item no. DD139-2520DB9027

Series Name: Cledy spark (Normal cone)
(DD139)

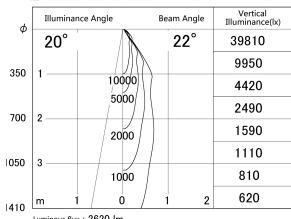


With Dark Mirror Reflector

■ Lighting Distribution Curve (cd/1000 lm)



■ Direct Horizontal Illuminance DD139-2520DB9027



Installation	Recessed mount
Type	Fixed downlight Φ125
Fixture wattage	24W
Beam angle	22
Color Temp.	2700K
CRI	Ra>90
Luminous	2618 lm
Body	Die-cast aluminum alloy
Body finish	N/A
Trim finish	Black
Reflector finish	Dark Mirror
IP Rate	IP20
Light source	COB module
Input Voltage	AC220~240V
Dimming Type	Non-Dimmable
Certificate	CE,CCC
Cut Hole	125mm

