

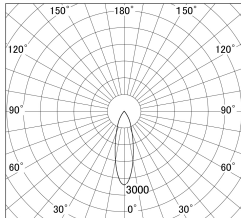
Item no. DD139-1520DB9035

Series Name: Cledy spark (Normal cone)
(DD139)

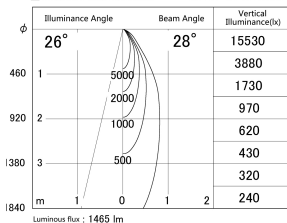


With Dark Mirror Reflector

■ Lighting Distribution Curve (cd/1000 lm)



■ Direct Horizontal Illuminance DD139-1520DB9035



| | |
|------------------|-------------------------|
| Installation | Recessed mount |
| Type | Fixed downlight Φ125 |
| Fixture wattage | 14W |
| Beam angle | 28 |
| Color Temp. | 3500K |
| CRI | Ra>90 |
| Luminous | 1464 lm |
| Body | Die-cast aluminum alloy |
| Body finish | N/A |
| Trim finish | Black |
| Reflector finish | Dark Mirror |
| IP Rate | IP20 |
| Light source | COB module |
| Input Voltage | AC220~240V |
| Dimming Type | Non-Dimmable |
| Certificate | CE,CCC |
| Cut Hole | 125mm |

