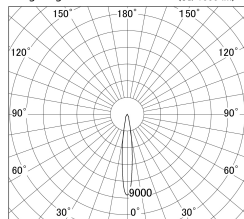


Item no. DD139-1515MB9035D

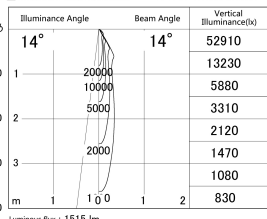
Series Name: Cledy spark (Deep cone)
(DD139_D)



■ Lighting Distribution Curve (cd/1000 lm)



■ Direct Horizontal Illuminance DD139-1515MB9035D



Installation	Recessed mount
Type	Fixed downlight Φ125
Fixture wattage	14W
Beam angle	14
Color Temp.	3500K
CRI	Ra>90
Luminous	1516 lm
Body	Die-cast aluminum alloy
Body finish	N/A
Trim finish	Black
Reflector finish	Mirror
IP Rate	IP20
Light source	COB module
Input Voltage	AC220~240V
Dimming Type	Non-Dimmable
Certificate	CE,CCC
Cut Hole	125mm

