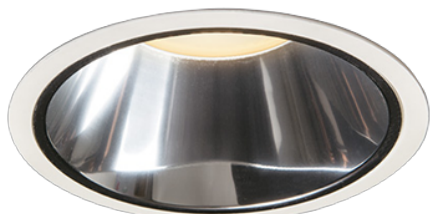


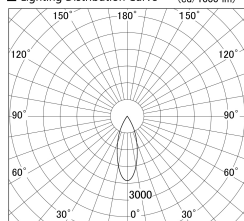
Item no. DD139-2530DW9027D

Series Name: Cledy spark (Deep cone)
(DD139_D)

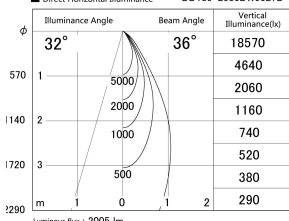


With Dark Mirror Reflector

■ Lighting Distribution Curve (cd/1000 lm)



■ Direct Horizontal Illuminance DD139-2530DW9027D



Installation	Recessed mount
Type	Fixed downlight Φ125
Fixture wattage	24W
Beam angle	36
Color Temp.	2700K
CRI	Ra>90
Luminous	2006 lm
Body	Die-cast aluminum alloy
Body finish	N/A
Trim finish	White
Reflector finish	Dark Mirror
IP Rate	IP20
Light source	COB module
Input Voltage	AC220~240V
Dimming Type	Non-Dimmable
Certificate	CE,CCC
Cut Hole	125mm

