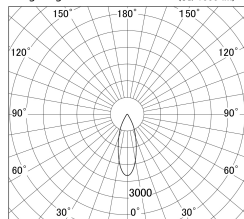


Item no. DD139-2030WW9040D

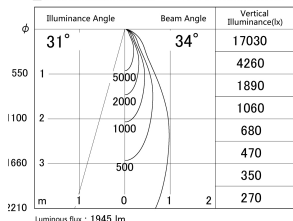
Series Name: Cledy spark (Deep cone)
(DD139_D)



■ Lighting Distribution Curve (cd/1000 lm)



■ Direct Horizontal Illuminance DD139-2030WW9040D



Installation	Recessed mount
Type	Fixed downlight Φ 125
Fixture wattage	21W
Beam angle	34
Color Temp.	4000K
CRI	Ra>90
Luminous	1944 lm
Body	Die-cast aluminum alloy
Body finish	N/A
Trim finish	White
Reflector finish	White
IP Rate	IP20
Light source	COB module
Input Voltage	AC220~240V
Dimming Type	Non-Dimmable
Certificate	CE,CCC
Cut Hole	125mm

