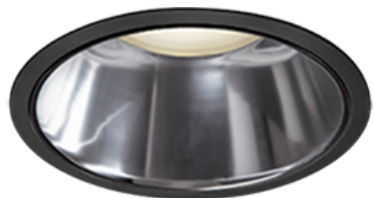


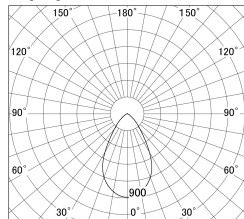
Item no. DD139-3050WB9027D

Series Name: Cledy spark (Deep cone)
(DD139_D)

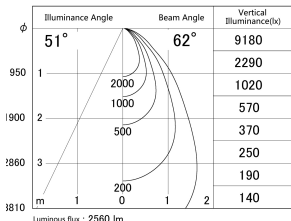


White Reflector

■ Lighting Distribution Curve (cd/1000 lm)



■ Direct Horizontal Illuminance DD139-3050WB9027D



Installation	Recessed mount
Type	Fixed downlight Φ 125
Fixture wattage	28W
Beam angle	62
Color Temp.	2700K
CRI	Ra>90
Luminous	2561 lm
Body	Die-cast aluminum alloy
Body finish	N/A
Trim finish	Black
Reflector finish	White
IP Rate	IP20
Light source	COB module
Input Voltage	AC220~240V
Dimming Type	Non-Dimmable
Certificate	CE,CCC
Cut Hole	125mm

