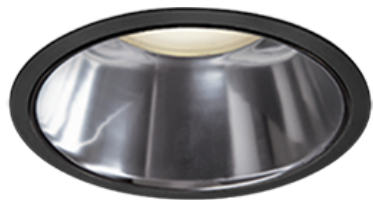


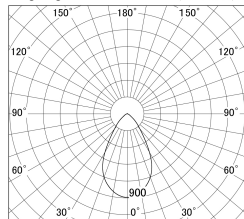
Item no. DD139-2050WB9040D

Series Name: Cledy spark (Deep cone)  
(DD139\_D)

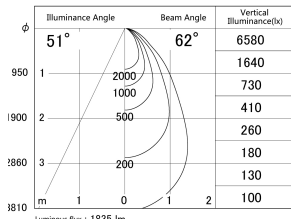


White Reflector

■ Lighting Distribution Curve (cd/1000 lm)



■ Direct Horizontal Illuminance DD139-2050WB9040D



|                  |                         |
|------------------|-------------------------|
| Installation     | Recessed mount          |
| Type             | Fixed downlight Φ125    |
| Fixture wattage  | 21W                     |
| Beam angle       | 62                      |
| Color Temp.      | 4000K                   |
| CRI              | Ra>90                   |
| Luminous         | 1836 lm                 |
| Body             | Die-cast aluminum alloy |
| Body finish      | N/A                     |
| Trim finish      | Black                   |
| Reflector finish | White                   |
| IP Rate          | IP20                    |
| Light source     | COB module              |
| Input Voltage    | AC220~240V              |
| Dimming Type     | Non-Dimmable            |
| Certificate      | CE,CCC                  |
| Cut Hole         | 125mm                   |

