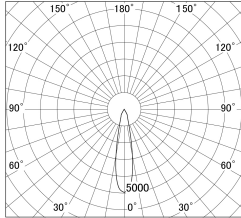


Item no. DD140-0820MB9040D

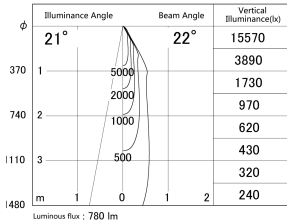
Series Name: Cledy spark (Deep cone)  
(DD140-D)



■ Lighting Distribution Curve (cd/1000 lm)



■ Direct Horizontal Illuminance DD140-0820MB9040D



Installation	Recessed mount
Type	Fixed downlight Φ100
Fixture wattage	7.5W
Beam angle	22
Color Temp.	4000K
CRI	Ra>90
Luminous	781 lm
Body	Die-cast aluminum alloy
Body finish	N/A
Trim finish	Black
Reflector finish	Mirror
IP Rate	IP20
Light source	COB module
Input Voltage	AC220~240V
Dimming Type	Non-Dimmable
Certificate	CE,CCC
Cut Hole	100mm

