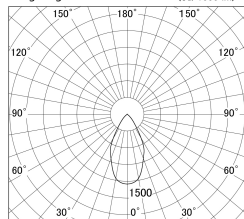


Item no. DD140-0850MB9040D

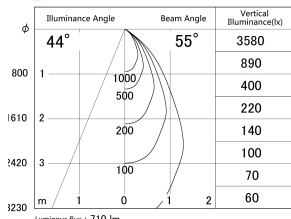
Series Name: Cledy spark (Deep cone)
(DD140-D)



■ Lighting Distribution Curve (cd/1000 lm)



■ Direct Horizontal Illuminance DD140-0850MB9040D



| | |
|------------------|----------------------------|
| Installation | Recessed mount |
| Type | Fixed downlight Φ 100 |
| Fixture wattage | 7.5W |
| Beam angle | 55 |
| Color Temp. | 4000K |
| CRI | Ra>90 |
| Luminous | 712 lm |
| Body | Die-cast aluminum alloy |
| Body finish | N/A |
| Trim finish | Black |
| Reflector finish | Mirror |
| IP Rate | IP20 |
| Light source | COB module |
| Input Voltage | AC220~240V |
| Dimming Type | Non-Dimmable |
| Certificate | CE,CCC |
| Cut Hole | 100mm |

